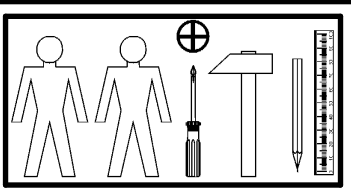
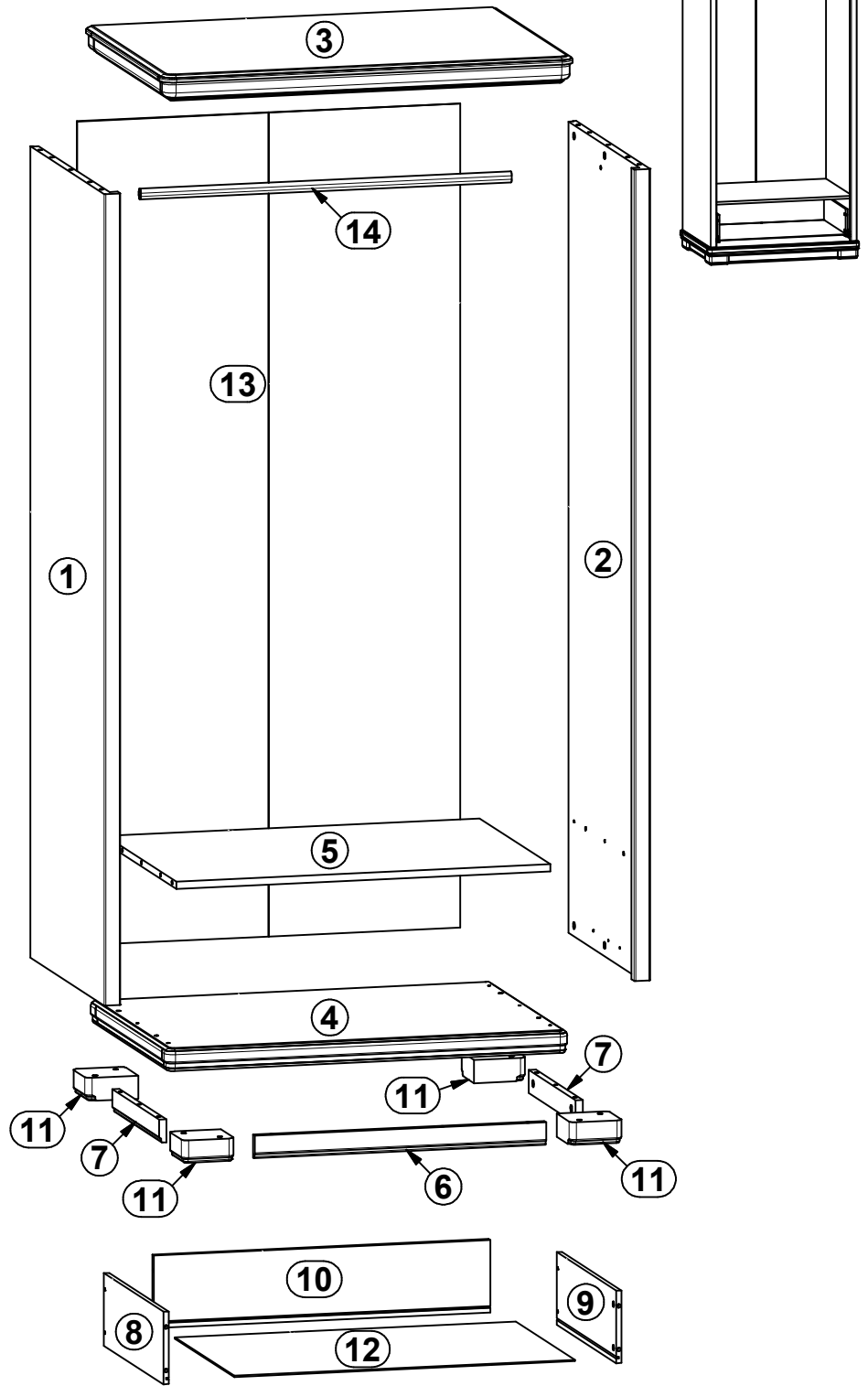


CHARLOTTA

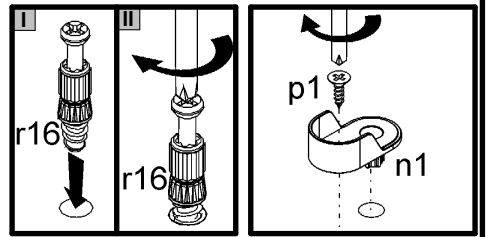
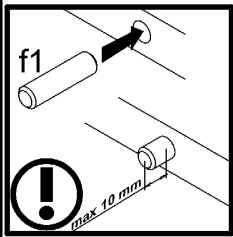
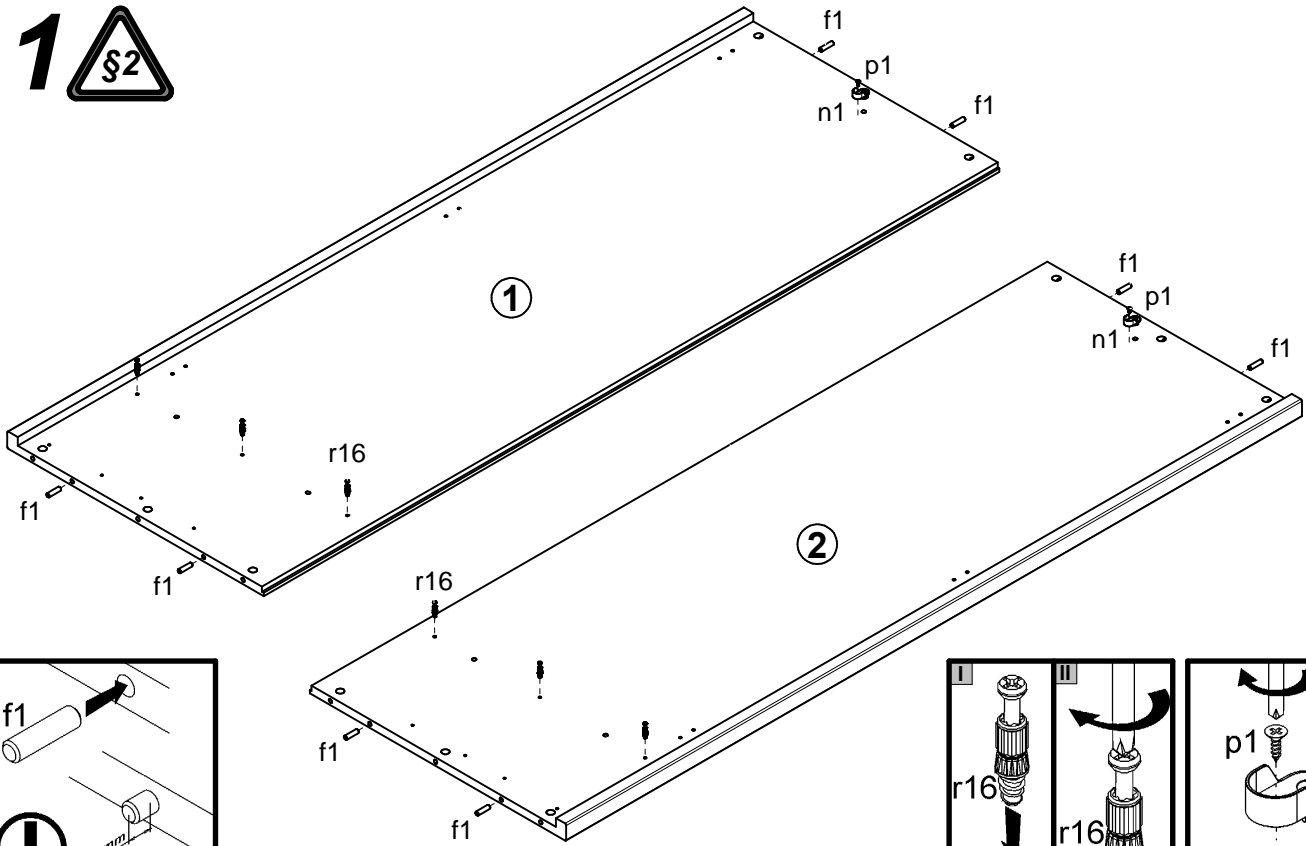
S96-SZF2D1S/19/9

A	B	C	D
1	S96-112	1791	624
2	S96-113	1791	624
3	S96-207	927	650
4	S96-208	905	637
5	S96-301	841	595
6	S96-406	655	51
7	S96-408	393	51
8	S96-509	500	160
9	S96-510	500	160
10	S96-511	756	160
11	S96-550	117	117
12	S96-903	766	498
13	S96-9902	1819	861
14	dr-833	833	22

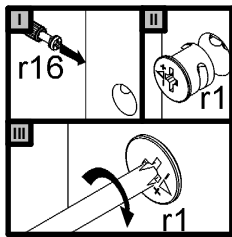
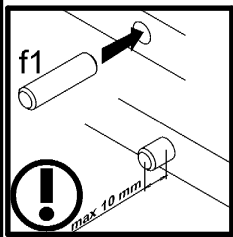
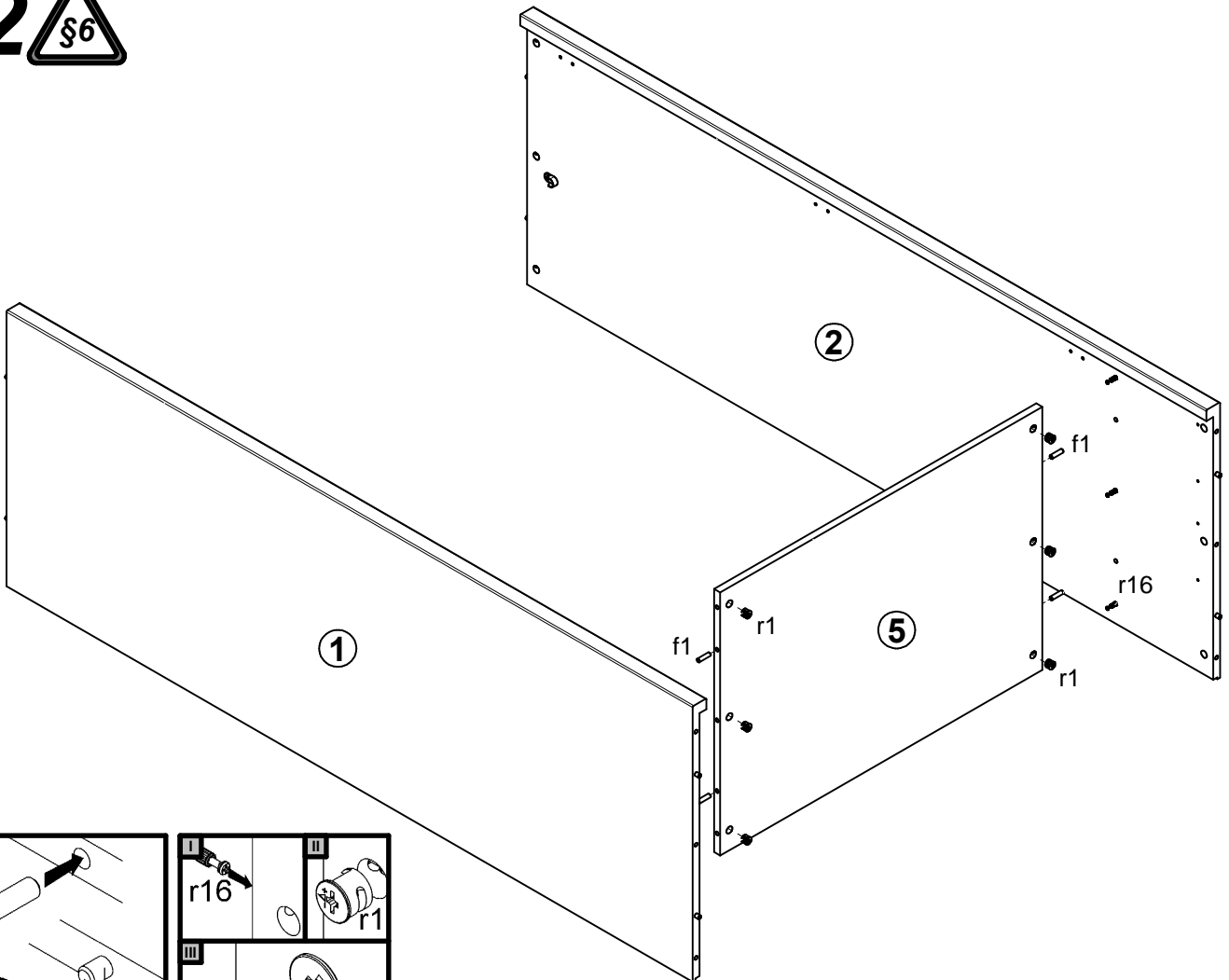


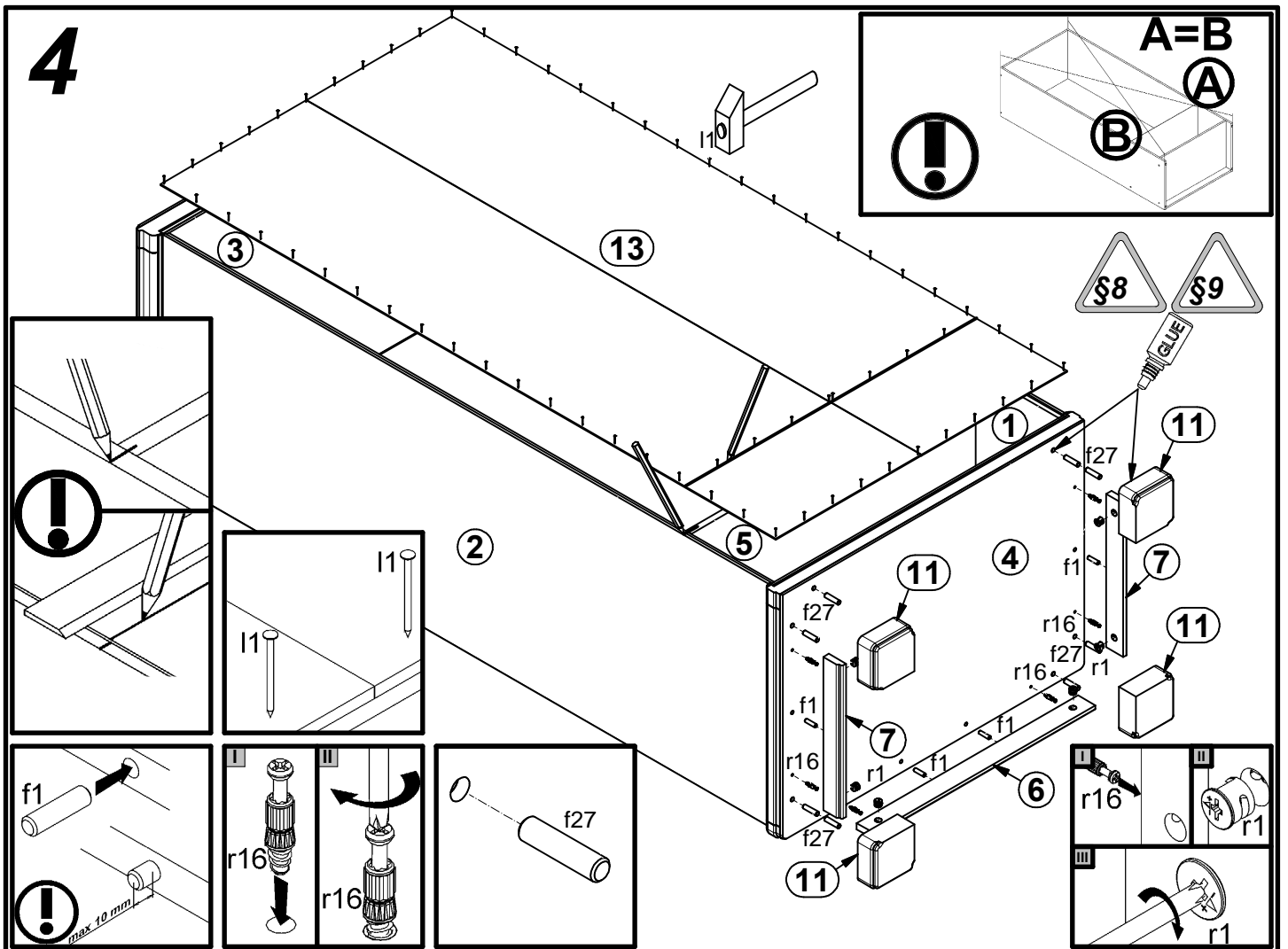
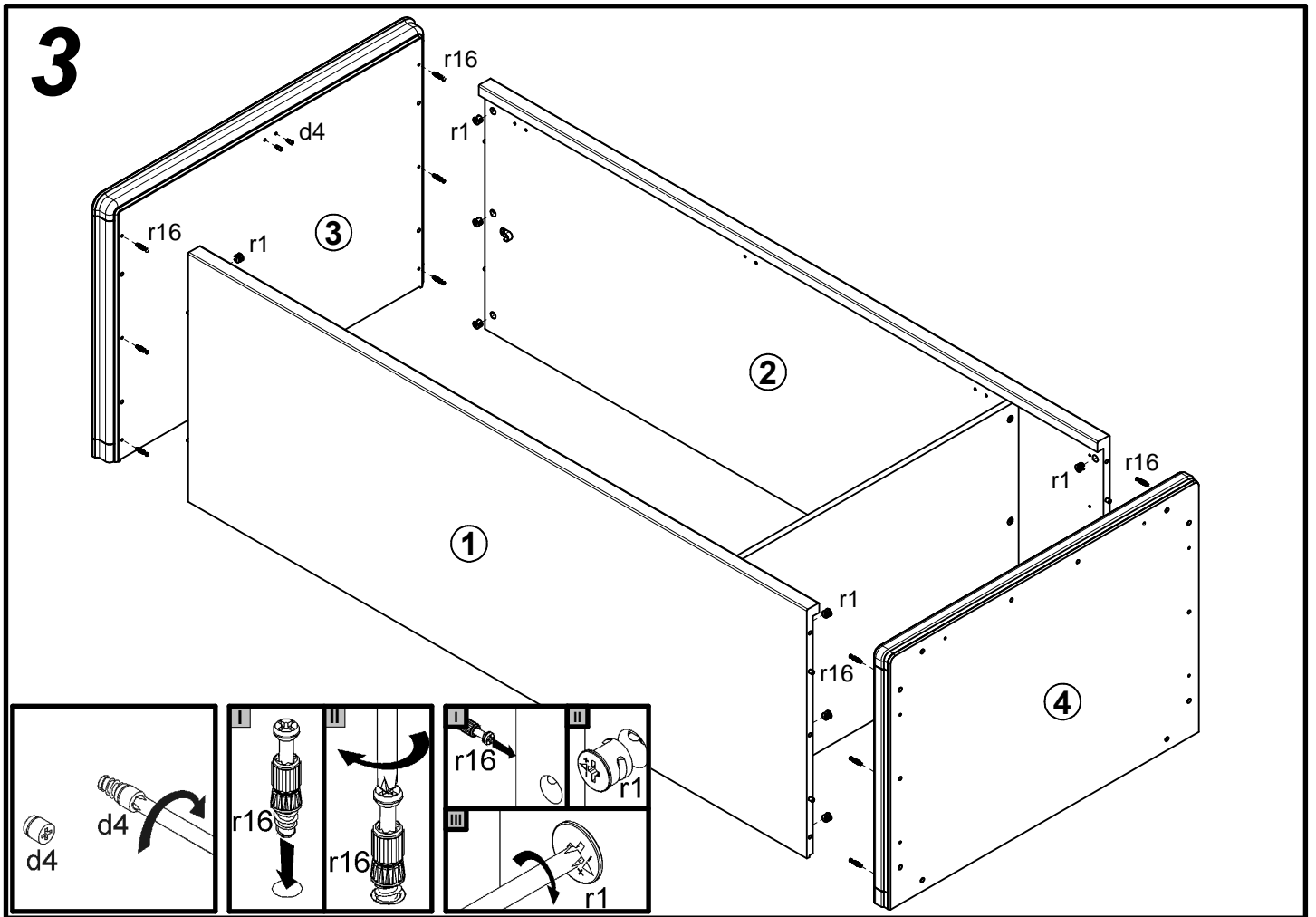
2x $\phi 6,3 \times 15$ mm d4	8x $\phi 6 \times 30$ mm e16	16x $\phi 8 \times 30$ mm f1	4x $\phi 6,5 \times 40$ mm f25	8x $\phi 10 \times 40$ mm f27	70x l1	2x n1	2x $\phi 3,5 \times 13$ mm p1	2x $\phi 3,5 \times 16$ mm p25
4x $\phi 3 \times 12$ mm p54	24x $\phi 1,5 \times 12$ mm #16 r1	4x $\phi 12 \times 10,5$ mm #12 r15	28x r16	6x $\phi 16$ s2	1x 483 mm t17	1x 500 mm w26\CL	1x 500 mm w26\CR	1x 500 mm w26\DL
1x 500 mm w26\DR	8x h=18 mm w36	1x n26\1	1x $\phi 3,5 \times 16$ mm p38	1x GLUE y1				

1

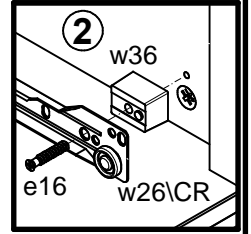
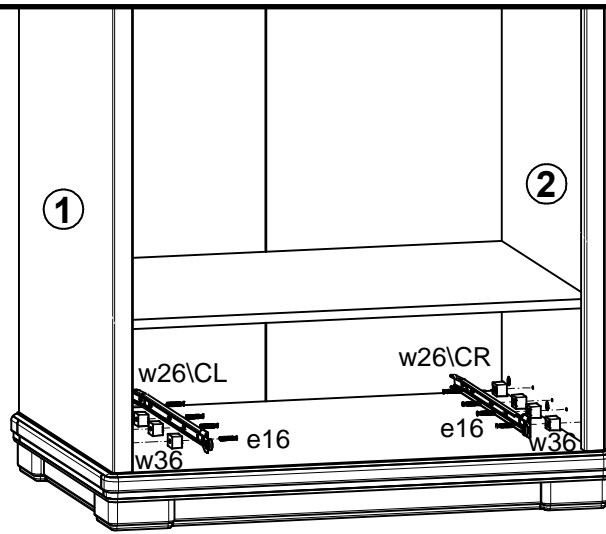


2

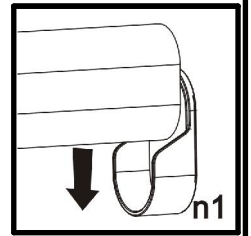
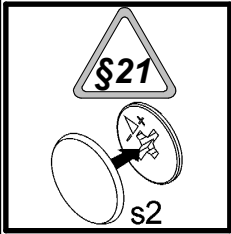
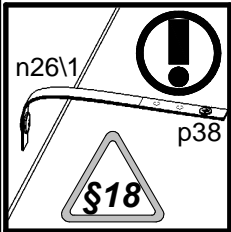
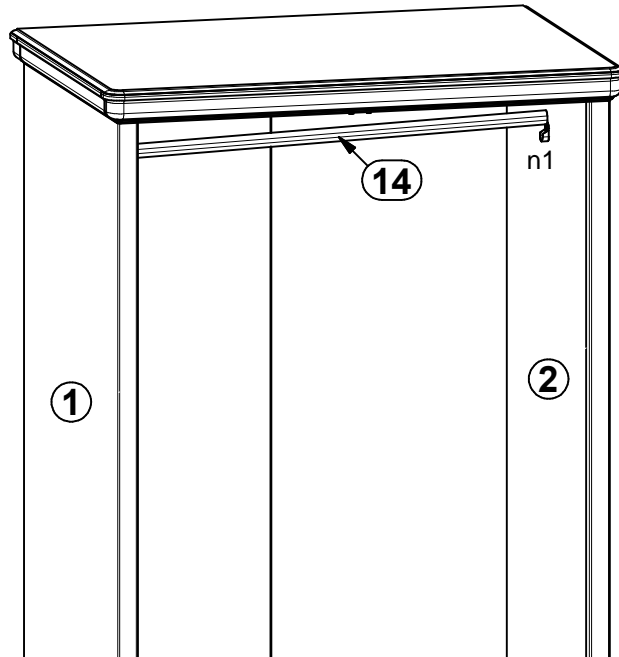




5



6



7

